



INTERNATIONAL GEMOLOGICAL INSTITUTE

ELECTRONIC COPY

LABORATORY GROWN DIAMOND REPORT

LG605355902

LABORATORY GROWN DIAMOND REPORT

IGI LABORATORY GROWN DIAMOND IDENTIFICATION REPORT

October 27, 2023

IGI Report Number

LG605355902

Description

LABORATORY GROWN DIAMOND

Shape and Cutting Style

ROUND BRILLIANT

Measurements

6.02 - 6.05 X 3.71 MM

GRADING RESULTS

Carat Weight

0.82 CARAT

Color Grade

FANCY INTENSE PINK

Clarity Grade

VS 1

Cut Grade

IDEAL

ADDITIONAL GRADING INFORMATION

Polish

EXCELLENT

Symmetry

EXCELLENT

Fluorescence

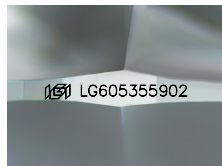
SLIGHT

Inscription(s)

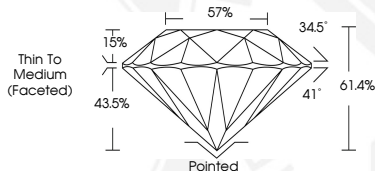
IGI LG605355902

Comments: This Laboratory Grown Diamond was created by Chemical Vapor Deposition (CVD) growth process.

Indications of post-growth treatment.



Sample Image Used



IGI LABORATORY GROWN DIAMOND ID REPORT

October 27, 2023

IGI Report Number LG605355902

ROUND BRILLIANT

6.02 - 6.05 X 3.71 MM

Carat Weight 0.82 CARAT

Color Grade FANCY INTENSE PINK

Clarity Grade VS 1

Cut Grade IDEAL

Polish EXCELLENT

Symmetry EXCELLENT

Fluorescence SLIGHT

Inscription(s) IGI LG605355902

Comments: This Laboratory Grown Diamond was created by Chemical Vapor Deposition (CVD) growth process. Indications of post-growth treatment.

IGI LABORATORY GROWN DIAMOND ID REPORT

October 27, 2023

IGI Report Number LG605355902

ROUND BRILLIANT

6.02 - 6.05 X 3.71 MM

Carat Weight 0.82 CARAT

Color Grade FANCY INTENSE PINK

Clarity Grade VS 1

Cut Grade IDEAL

Polish EXCELLENT

Symmetry EXCELLENT

Fluorescence SLIGHT

Inscription(s) IGI LG605355902

Comments: This Laboratory Grown Diamond was created by Chemical Vapor Deposition (CVD) growth process. Indications of post-growth treatment.



THIS DOCUMENT WAS PRODUCED WITH THE FOLLOWING SECURITY MEASURES: SPECIAL DOCUMENT PAPER, INK SCREENS, WATERMARK, BACKGROUND DESIGN, HOLOGRAM AND OTHER SECURITY FEATURES NOT LISTED AND DO EXCEED DOCUMENT SECURITY INDUSTRY GUIDELINES.

For terms & conditions and to verify this report, please visit www.igi.org