



# INTERNATIONAL GEMOLOGICAL INSTITUTE

ELECTRONIC COPY

## LABORATORY GROWN DIAMOND REPORT

LG588344608

### LABORATORY GROWN DIAMOND REPORT

#### IGI LABORATORY GROWN DIAMOND IDENTIFICATION REPORT

July 18, 2023  
IGI Report Number LG588344608  
Description LABORATORY GROWN DIAMOND  
Shape and Cutting Style ROUND BRILLIANT  
Measurements 5.51 - 5.54 X 3.34 MM

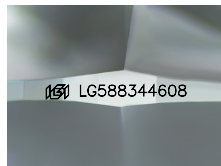
#### GRADING RESULTS

Carat Weight 0.62 CARAT  
Color Grade FANCY VIVID BLUE  
Clarity Grade VS 1  
Cut Grade IDEAL

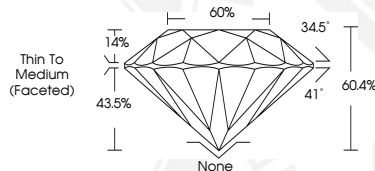
#### ADDITIONAL GRADING INFORMATION

Polish EXCELLENT  
Symmetry EXCELLENT  
Fluorescence NONE  
Inscription(s) IGI LG588344608

Comments: This Laboratory Grown Diamond was created by Chemical Vapor Deposition (CVD) growth process. Indications of post-growth treatment.



Sample Image Used



#### IGI LABORATORY GROWN DIAMOND ID REPORT

July 18, 2023  
IGI Report Number LG588344608  
ROUND BRILLIANT  
5.51 - 5.54 X 3.34 MM  
Carat Weight 0.62 CARAT  
Color Grade FANCY VIVID BLUE  
Clarity Grade VS 1  
Cut Grade IDEAL  
Polish EXCELLENT  
Symmetry EXCELLENT  
Fluorescence NONE  
Inscription(s) IGI LG588344608

Comments: This Laboratory Grown Diamond was created by Chemical Vapor Deposition (CVD) growth process. Indications of post-growth treatment.

#### IGI LABORATORY GROWN DIAMOND ID REPORT

July 18, 2023  
IGI Report Number LG588344608  
ROUND BRILLIANT  
5.51 - 5.54 X 3.34 MM  
Carat Weight 0.62 CARAT  
Color Grade FANCY VIVID BLUE  
Clarity Grade VS 1  
Cut Grade IDEAL  
Polish EXCELLENT  
Symmetry EXCELLENT  
Fluorescence NONE  
Inscription(s) IGI LG588344608

Comments: This Laboratory Grown Diamond was created by Chemical Vapor Deposition (CVD) growth process. Indications of post-growth treatment.



THIS DOCUMENT WAS PRODUCED WITH THE FOLLOWING SECURITY MEASURES: SPECIAL DOCUMENT PAPER, INK SCREENS, WATERMARK, BACKGROUND DESIGN, HOLOGRAM AND OTHER SECURITY FEATURES NOT LISTED AND DO EXCEED DOCUMENT SECURITY INDUSTRY GUIDELINES.

For terms & conditions and to verify this report, please visit [www.igi.org](http://www.igi.org)