



INTERNATIONAL GEMOLOGICAL INSTITUTE

ELECTRONIC COPY

LABORATORY GROWN DIAMOND REPORT

LG584351768

LABORATORY GROWN DIAMOND REPORT

IGI LABORATORY GROWN DIAMOND IDENTIFICATION REPORT

June 2, 2023
IGI Report Number LG584351768
Description LABORATORY GROWN DIAMOND
Shape and Cutting Style ROUND BRILLIANT
Measurements 5.19 - 5.20 X 3.22 MM

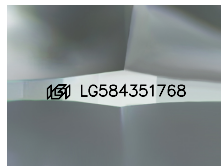
GRADING RESULTS

Carat Weight 0.53 CARAT
Color Grade FANCY VIVID PINK
Clarity Grade VS 1
Cut Grade IDEAL

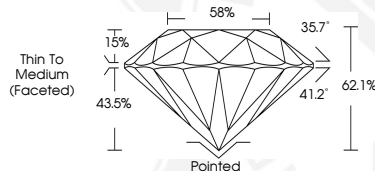
ADDITIONAL GRADING INFORMATION

Polish VERY GOOD
Symmetry EXCELLENT
Fluorescence SLIGHT
Inscription(s) IGI LG584351768

Comments: This Laboratory Grown Diamond was created by
Chemical Vapor Deposition (CVD) growth process.
Indications of post-growth treatment.



Sample Image Used



IGI LABORATORY GROWN DIAMOND ID REPORT

June 2, 2023
IGI Report Number LG584351768
ROUND BRILLIANT
5.19 - 5.20 X 3.22 MM
Carat Weight 0.53 CARAT
Color Grade FANCY VIVID PINK
Clarity Grade VS 1
Cut Grade IDEAL
Polish VERY GOOD
Symmetry EXCELLENT
Fluorescence SLIGHT
Inscription(s) IGI LG584351768

Comments: This Laboratory Grown Diamond was created by
Chemical Vapor Deposition (CVD)
growth process. Indications of
post-growth treatment.

IGI LABORATORY GROWN DIAMOND ID REPORT

June 2, 2023
IGI Report Number LG584351768
ROUND BRILLIANT
5.19 - 5.20 X 3.22 MM
Carat Weight 0.53 CARAT
Color Grade FANCY VIVID PINK
Clarity Grade VS 1
Cut Grade IDEAL
Polish VERY GOOD
Symmetry EXCELLENT
Fluorescence SLIGHT
Inscription(s) IGI LG584351768

Comments: This Laboratory Grown Diamond was created by
Chemical Vapor Deposition (CVD)
growth process. Indications of
post-growth treatment.



THIS DOCUMENT WAS PRODUCED WITH THE FOLLOWING SECURITY MEASURES: SPECIAL DOCUMENT PAPER, INK SCREENS, WATERMARK, BACKGROUND DESIGN, HOLOGRAM AND OTHER SECURITY FEATURES NOT LISTED AND DO EXCEED DOCUMENT SECURITY INDUSTRY GUIDELINES.

For terms & conditions and to verify this report, please visit www.igi.org