



INTERNATIONAL GEMOLOGICAL INSTITUTE

ELECTRONIC COPY

LABORATORY GROWN DIAMOND REPORT

LG575381718

LABORATORY GROWN DIAMOND REPORT

IGI LABORATORY GROWN DIAMOND IDENTIFICATION REPORT

April 6, 2023
IGI Report Number LG575381718
Description LABORATORY GROWN DIAMOND
Shape and Cutting Style ROUND BRILLIANT
Measurements 5.03 - 5.06 X 3.17 MM

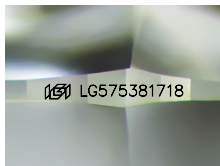
GRADING RESULTS

Carat Weight 0.50 CARAT
Color Grade G
Clarity Grade SI 1
Cut Grade EXCELLENT

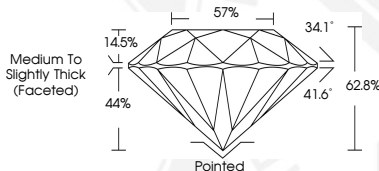
ADDITIONAL GRADING INFORMATION

Polish EXCELLENT
Symmetry EXCELLENT
Fluorescence NONE
Inscription(s) IGI LG575381718

Comments: This Laboratory Grown Diamond was created by Chemical Vapor Deposition (CVD) growth process and may include post-growth treatment. Type IIa



Sample Image Used



IGI LABORATORY GROWN DIAMOND ID REPORT

April 6, 2023
IGI Report Number LG575381718
ROUND BRILLIANT
5.03 - 5.06 X 3.17 MM
Carat Weight 0.50 CARAT
Color Grade G
Clarity Grade SI 1
Cut Grade EXCELLENT
Polish EXCELLENT
Symmetry EXCELLENT
Fluorescence NONE
Inscription(s) IGI LG575381718

Comments: This Laboratory Grown Diamond was created by Chemical Vapor Deposition (CVD) growth process and may include post-growth treatment. Type IIa

IGI LABORATORY GROWN DIAMOND ID REPORT

April 6, 2023
IGI Report Number LG575381718
ROUND BRILLIANT
5.03 - 5.06 X 3.17 MM
Carat Weight 0.50 CARAT
Color Grade G
Clarity Grade SI 1
Cut Grade EXCELLENT
Polish EXCELLENT
Symmetry EXCELLENT
Fluorescence NONE
Inscription(s) IGI LG575381718

Comments: This Laboratory Grown Diamond was created by Chemical Vapor Deposition (CVD) growth process and may include post-growth treatment. Type IIa



THIS DOCUMENT WAS PRODUCED WITH THE FOLLOWING SECURITY MEASURES: SPECIAL DOCUMENT PAPER, INK SCREENS, WATERMARK, BACKGROUND DESIGN, HOLOGRAM AND OTHER SECURITY FEATURES NOT LISTED AND DO EXCEED DOCUMENT SECURITY INDUSTRY GUIDELINES.

For terms & conditions and to verify this report, please visit www.igi.org